

Owen Stone  
Porcelain Stone®



# Owen Stone

## Porcelain Stone<sup>®</sup>

### **Nature – and humanity’s affinity for it – influences design in every space.**

From color to texture, natural finishes and those inspired by the outdoors bring both solace and sophistication to our interiors. Owen Stone by Crossville takes its cues from the elegance of Italian Pietra di Cardosa and the United State’s Vermont Slate and merges those qualities with technical advancements to create a porcelain tile unlike any before. You will notice the difference in Owen Stone when you first touch it. The Leathered finish offers a buttery, cashmere-like feel unique to Crossville – a first for porcelain tile. Smooth, silky, and soft to the touch, this finish is perfect for bare-feet floors and luxurious wall finishes, yet features a DCOF suitable for commercial applications. Our Leathered finish creates a subtle, glowing sheen with a distinct, satiny visual depth. Subtle, minimalist veining resists high traffic and the elements indoors and out, thanks to an additional textured exterior finish offered in the line. As big as the great outdoors, our soft-to-the-touch, slate-inspired porcelain tile features domestically manufactured, impressive 24”x48” tiles, as well as traditional 12”x24” and 24”x24” offerings. All are rectified for high-end installations indoors and out. For demanding exterior applications, our textured (EXT) finish tiles have an average minimum 0.60 DCOF and come in 12”x24” and 24”x24”. Rounding out the offering are 2 mosaics, bullnose, and covebase. This impressive trim package provides a large range of application feasibility – from durable commercial installations to gorgeous residential interiors. Feel the difference of Owen Stone by asking for a sample today or ordering online at [CrossvilleInc.com](http://CrossvilleInc.com)



Floor: **OST03** ▶ Slipper 24 x 48 LTR





Floor: **OST02** ▶ Bunny 24 x 24 LTR and 2 x 2 Mosaic Border  
Wall: **OST02** ▶ Bunny 24 x 48 LTR  
Stall Walls: Ossido Nero L7032 5.6  
Countertop: Slabs Black Tie Polished PC009

# Color Palette

## Available Colors



**OST01** ▶ Down LTR/EXT



**OST02** ▶ Bunny LTR/EXT



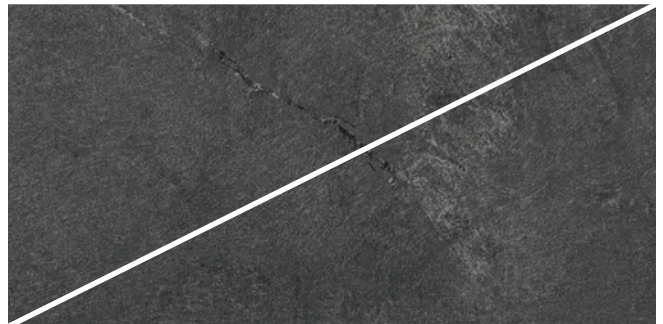
**OST03** ▶ Slipper LTR/EXT



**OST04** ▶ Mittens LTR/EXT

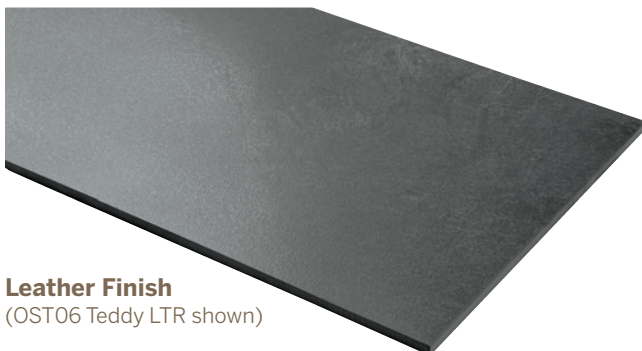


**OST05** ▶ Sable LTR/EXT



**OST06** ▶ Teddy LTR/EXT

## Available Finishes



**Leather Finish**  
(OST06 Teddy LTR shown)



**Exterior Finish**  
(OST06 Teddy EXT shown)

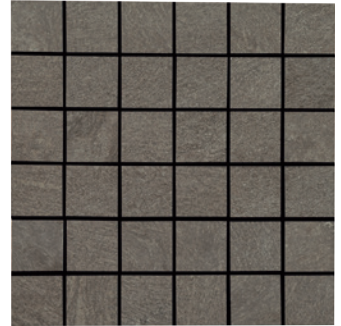
Available Mosaics



**OST01.10202LMOS** ▶  
Down 2 x 2 Mosaic



**OST03.10202LMOS** ▶  
Slipper 2 x 2 Mosaic



**OST05.10202LMOS** ▶  
Sable 2 x 2 Mosaic



**OST01.1CRSLMOS** ▶  
Down Crossville Mosaic†



**OST03.1CRSLMOS** ▶  
Slipper Crossville Mosaic†



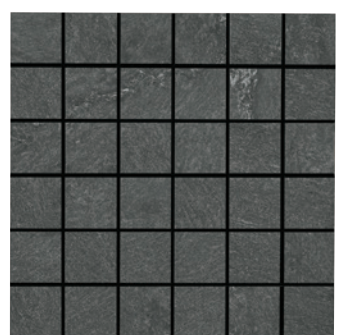
**OST05.1CRSLMOS** ▶  
Sable Crossville Mosaic†



**OST02.10202LMOS** ▶  
Bunny 2 x 2 Mosaic



**OST04.10202LMOS** ▶  
Mittens 2 x 2 Mosaic



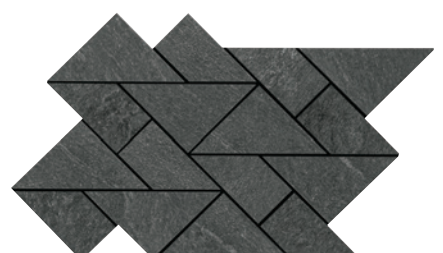
**OST06.10202LMOS** ▶  
Teddy 2 x 2 Mosaic



**OST02.1CRSLMOS** ▶  
Bunny Crossville Mosaic†



**OST04.1CRSLMOS** ▶  
Mittens Crossville Mosaic†



**OST06.1CRSLMOS** ▶  
Teddy Crossville Mosaic†

† Due to this mosaic's design, caution should be used when installing on surfaces that might contact bare skin or other delicate materials. To prevent possible injury or damage from sharp corners that might be exposed above the grout line, install per ANSI 108 guidelines in order to minimize or prevent lippage.



OST05 ▶ Sable 12 x 24 LTR



Floor: **OST04** ▶ Mittens 24 x 24 LTR



Floor: **OST01** ▶ Down 24 x 24 EXT  
Wall: **OST01** ▶ Down Crossville Mosaic

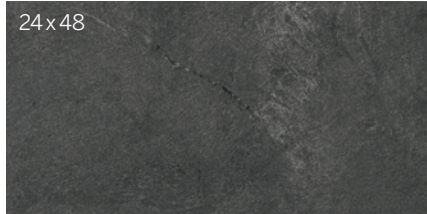




Floor: **OST06** ▶ Teddy 24 x 48 LTR

# Specifications

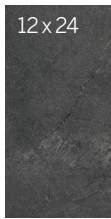
## Sizes (Shown in OST06 Teddy)



24 x 48



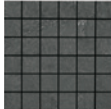
24 x 24



12 x 24



Crossville Mosaic†  
(Mounted on a  
217 x 372 mm sheet)



2 x 2 Mosaic  
(Mounted on a  
298 x 298 mm sheet)

† Due to this mosaic's design, caution should be used when installing on surfaces that might contact bare skin or other delicate materials. To prevent possible injury or damage from sharp corners that might be exposed above the grout line, install per ANSI 108 guidelines in order to minimize or prevent lippage.

## Sizes & Finishes

### Field Tile - Rectified

Available in all colors

Nominal (in)	Actual (mm)	Thickness (mm)	Grout Joint (mm)	Finish
12 x 24	297 x 597	9.5	3	LTR/EXT*
24 x 24	597 x 597	9.5	3	LTR/EXT
24 x 48	597 x 1197	10.5	3	LTR

**Note:** Field tile is rectified with a minimum 3mm grout joint  
\* Extended lead time on 12 x 24 EXT finish.

### Mosaics

Available in all colors

Nominal (in)	Actual Size (mm)	Thickness (mm)	Grout Joint (mm)	Finish
2 x 2 Mosaic**	298 x 298	9.5	3	LTR
Crossville Mosaic†	217 x 372	9.5	2	LTR

\*\* Mounted on 12 x 12 sheet with 3mm grout joints

† Due to this mosaic's design, caution should be used when installing on surfaces that might contact bare skin or other delicate materials. To prevent possible injury or damage from sharp corners that might be exposed above the grout line, install per ANSI 108 guidelines in order to minimize or prevent lippage.

### Coordinating Trim

Available in all colors

Nominal (in)	Actual (mm)	Thickness (mm)	Grout Joint (mm)	Finish
6 x 12 Cove Base	150 x 297	9.5	3	UPS
4 x 24 Single Bullnose	96 x 597	9.5	3	LTR



6 x 12  
Cove Base



4 x 24 Bullnose

## Product Performance

Breaking Strength	>450 lbf	ASTM C648
Bond Strength	>200 psi	ASTM C482
Chemical Resistance	Unaffected	ASTM C650
Frost Resistance	Resistant	ASTM C1026
Water Absorption	<0.20%	ASTM C373
Scratch Hardness	7	Mohs Scale

## Wet Dynamic Coefficient of Friction Range

LTR (Leather)	0.42 - 0.52	AcuTest <sup>sm</sup>
EXT (Textured)	0.60 - 0.70	AcuTest <sup>sm</sup>

## Get Planked!

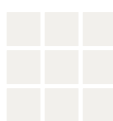
Our Porcelain Stone® products are available in popular plank shapes with no minimum order and quick fulfillment. See website for more details and sizes.



## Shade & Texture Index

Owen Stone has a shade variation of V3.

V1



V2



V3



V4



V1 Uniform appearance  
V2 Slight Variation  
**V3 Moderate Variation**  
V4 Substantial Variation

This porcelain tile product is produced with a V3 variation. While the colors and/or textures present on a single piece of tile will be indicative of the colors and/or textures to be expected on the other tiles, the amount of colors and/or texture on each piece may vary significantly. It is recommended that the range be viewed before selection.

### Recommended Use

Owen Stone LTR is recommended for interior floors, walls, counter tops and exterior walls in both residential and commercial applications. Owen Stone EXT is recommended for exterior floors and walls in both residential and commercial applications. **If offset pattern is required for tiles 15 inches or longer, Crossville® recommends an offset of not greater than 33%.** See [CrossvilleInc.com](http://CrossvilleInc.com) for detailed installation instructions.

### Leather Finish (LTR)

Crossville® Leathered finish creates a subtle glow, visual depth, and a smooth feel. The finish is achieved by running diamond-tipped brushes over the surface of fired porcelain tile, resulting in an incredibly soft feel and tremendous visual richness. While our Leathered finish may be soft to the touch, the DCOF remains high, making it suitable for residential and commercial interior floor and wall applications and exterior vertical surfaces.

### Wet area use for Owen Stone Mosaics

Crossville® produces the Owen Stone 2 x 2 and Crossville mosaics with the Leather (LTR) finish. The AcuTest<sup>sm</sup> wet Dynamic COF of Owen Stone is  $\geq 0.42$ . Their small sizes ensure frequent grout joints which provides traction and drainage. Crossville cannot control situations involving incorrect installation, improper slope to the drain for elimination of standing water and poor surface cleaning.

This information is provided so that customers may make a realistic and informed decision when comparing Owen Stone to other tile products in wet area environments, such as residential/commercial bathrooms, showers, and interior pool decks.

### Care and Maintenance

Regular cleaning is the best way to keep Owen Stone tile looking good for years to come. Use clean, hot water (combined with a household cleaner for more aggressive cleaning). Rinse thoroughly and dry with a soft cloth to prevent water spots. No waxes or sealers are needed. More information regarding the care and maintenance of Crossville products is available at [CrossvilleInc.com](http://CrossvilleInc.com).

### Our Warranty

Crossville Inc guarantees that its products will meet or exceed the performance specifications outlined in ANSI A137.1-2012 and in the performance data section of the Crossville, Inc. general product catalog. For complete details check our website at [CrossvilleInc.com](http://CrossvilleInc.com).

### Hydrotect

Our porcelain tiles are available with Hydrotect. Crossville's revolutionary invisible coating harnesses the power of light, water, and oxygen to create the best defense against dirt and pollution. Whether indoors or out, floors and walls stay cleaner, providing a superior experience in any space. Please request a sample before ordering. For complete details check our website at [CrossvilleInc.com](http://CrossvilleInc.com).



### Crossville® Sample Express

Visit the website to learn more: [CrossvilleInc.com/Products/Owen-Stone](http://CrossvilleInc.com/Products/Owen-Stone)

#### Loose Samples for Architects & Designers

#### Loose Tile Samples

Sizes may vary depending on product series  
Max. of 4 large field tile per order

#### Replacement Chips for PSS Rack

Max. of 5, 2 x 2 chips per color

#### Standard Shipping

UPS Ground

### National Accounts

For over 20 years we have been offering Porcelain tile to commercial customers at National Accounts pricing programs with special discounts. The National Accounts department provides materials forecasting, sales support and samples.

### Exterior Cladding

Crossville's Porcelain Stone® Exterior Cladding Systems are suitable for virtually any conventional masonry application. When used in conjunction with our exterior cladding systems, Crossville's Porcelain Stone offers clear advantages: decreased construction costs, less site disturbance, low-to-zero maintenance after installation, accelerated construction schedules and greater strength than traditional masonry.

### Our Warranty

Crossville Inc. guarantees that its products will meet or exceed the performance specifications outlined in ANSI A137.1-2012 and in the performance data section of the Crossville, Inc. general product catalog. For complete details check our website at [CrossvilleInc.com](http://CrossvilleInc.com).

*Information listed here is subject to change. Please refer to [CrossvilleInc.com](http://CrossvilleInc.com) for the latest, most accurate information.*

### Trade Organizations



### Environmentally Aware



Owen Stone

Crossville, Inc.

PO Box 1168  
Crossville, TN  
38557

Phone 931.484.2110  
Fax 931.456.2956  
E-Mail [Crossc@CrossvilleInc.com](mailto:Crossc@CrossvilleInc.com)  
Web [CrossvilleInc.com](http://CrossvilleInc.com)



Above:  
Floor: **OST01** ▶ Down 24 x 24 EXT  
Wall: **OST01** ▶ Down Crossville Mosaic  
On the cover:  
Floor: **OST05** ▶ Sable 12 x 24 LTR  
Wall: **OST05** ▶ Sable 12 x 24 LTR  
Wall Behind the Tub: **OST03** ▶ Slipper Crossville Mosaic

LIT-OST-21

 **CROSSVILLE**®