
Notorious
Porcelain Stone®



Notorious

Porcelain Stone[®]

Let your reputation for design proceed you with Notorious

Don't just create a space. Design one with creative impact. Notorious from Crossville takes the city with style and strength. Porcelain tile displayed in distinct concrete visuals deliver urban sophistication with a level of endurance true concrete can't offer. From modular sizing, mosaics, and brick plank looks to trim including a cove base and bullnose, Crossville offers design flexibility in one complete package.

Need even more flexibility? The warm neutrals of Notorious perfectly blend with Crossville's Nest wood-look porcelain for even more solutions. Wrap concrete with planks for a new take on parquet, or create your own uptown flair when you mix and match to customize your design.

- Complete trim package including mosaics suitable for shower floors
- All sizes are rectified and modular with a minimum of 3mm grout joint
- Cross-Sheen finish for easy cleaning



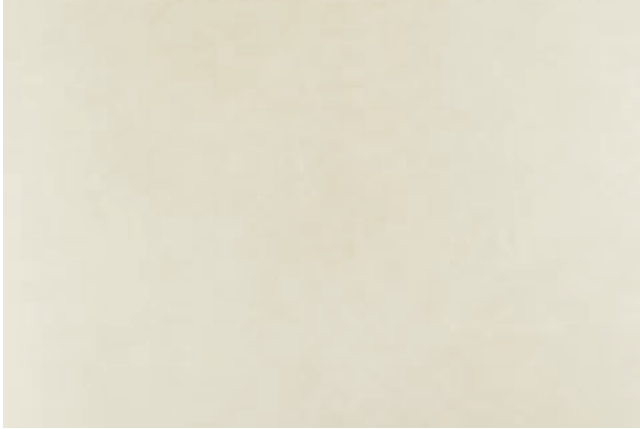
NTRO4 ▶ Suspense 12 x 24, 4 x 12 Bullnose, and 6 x 12 Cove Base UPS





Color Palette

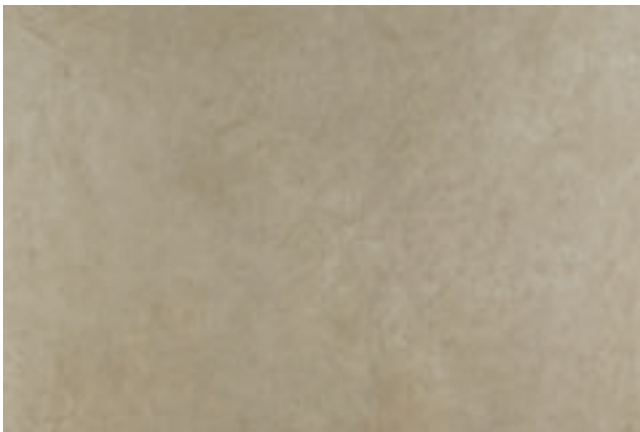
Available Colors



NTR01 ▶ Femme Fatale



NTR02 ▶ Private Eye



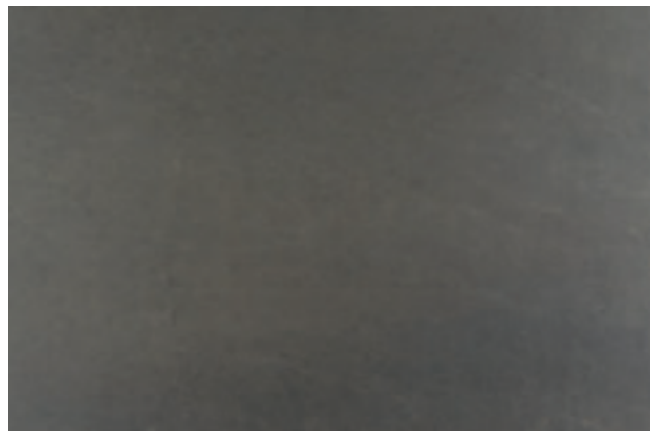
NTR03 ▶ Sugar Daddy



NTR04 ▶ Suspense



NTR05 ▶ Leading Man



NTR06 ▶ Film Noir



NTR02 ▶ Private Eye 12 x 12 Mosaic
NTR03 ▶ Sugar Daddy 3 x 15 UPS

Specifications

Sizes (Shown in NTR04)



Sizes & Finishes

Field Tile

Available in all colors

Nominal (in)	Actual (mm)	Thickness (mm)	Finish
3 x 15	72 x 372	10.5	UPS
12 x 12	297 x 297	10.5	UPS/HON
12 x 24	297 x 597	10.5	UPS/HON
24 x 24	597 x 597	10.5	UPS/HON
24 x 36	597 x 897	10.5	UPS/HON

Crossville recommends a grout joint of 3mm
Actual measurements stated in inches indicate tile is calibrated (non-rectified).
Actual measurements stated in mm indicate tile is rectified.

Mosaics

Available in all colors

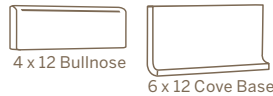
Nominal (in)	Actual (in)	Thickness (mm)	Finish
Mosaic*	12 x 12	10.5	UPS

*Mounted on 12 x 12 sheet

Coordinating Trim

Nominal (mm)	Actual (mm)	Thickness (mm)	Finish
4 x 12 Single Bullnose	97 x 297	10.5	UPS/HON**
6 x 12 Cove Base	150 x 297	10	UPS

**HON finish is special order only



Product Performance

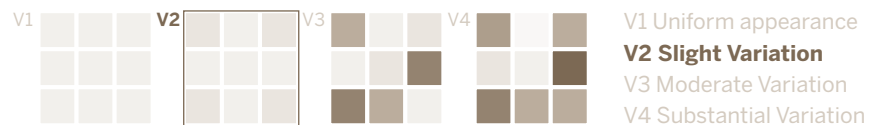
Breaking Strength	>500 lbf	ASTM C648
Bond Strength	>200 psi	ASTM C482
Chemical Resistance	Unaffected	ASTM C650
Frost Resistance	Resistant	ASTM C1026
Water Absorption	<0.20%	ASTM C373
Scratch Hardness	7	Mohs Scale

Wet Dynamic Coefficient of Friction Range

UPS	0.50 - 0.60	AcuTest sm
HON	0.42 - 0.52	AcuTest sm

Shade & Texture Index

Notorious has a shade variation of V2.



This porcelain tile product is produced with a V2 variation. Expect that the amount of color and texture on each piece may vary slightly. Inspect the product upon delivery and for best results, blend tile from several cartons during installation.

Get Planked!

Our Porcelain Stone® products are available in popular plank shapes with no minimum order and quick fulfillment.

See website for more details and sizes.



Recommended Use

Notorious is recommended for interior floors, walls, counter tops and exterior walls in both residential and commercial applications. If offset pattern is required for tiles 18 inches or longer, Crossville® recommends an offset of not greater than 33%. See CrossvilleInc.com for detailed installation instructions.

Environmentally Conscious

Notorious contains a minimum of 4% pre-consumer recycled content and is manufactured by Crossville® using processes that recycle nearly 12 million pounds of previously discarded filtrate and fired tile waste. In addition to its own fired waste recycling, Crossville also accepts and recycles reclaimed, previously installed tile through its Tile Take-Back™ Program. For more information, visit CrossvilleInc.com/green.

Care and Maintenance

Regular cleaning is the best way to keep Notorious tile looking good for years to come. Use clean, hot water (combined with a household cleaner for more aggressive cleaning). Rinse thoroughly and dry with a soft cloth to prevent water spots. No waxes or sealers are needed. More information regarding the care and maintenance of Crossville products is available at CrossvilleInc.com.

Our Warranty

Crossville Inc guarantees that its products will meet or exceed the performance specifications outlined in ANSI A137.1-2012 and in the performance data section of the Crossville, Inc. general product catalog. For complete details check our website at CrossvilleInc.com.

Hydrotect

Our porcelain tiles are available with Hydrotect. Crossville's revolutionary invisible coating harnesses the power of light, water, and oxygen to create the best defense against dirt and pollution. Whether indoors or out, floors and walls stay cleaner, providing a superior experience in any space. For complete details check our website at CrossvilleInc.com.



Information listed here is subject to change. Please refer to CrossvilleInc.com for the latest, most accurate information.



NTR03 ▶ Sugar Daddy 3 x 15 UPS
Nest™ AV364 ▶ Mindful 3 x 15 UPS

Trade Organizations



Environmentally Aware



Notorious

Crossville, Inc.

PO Box 1168
Crossville, TN
38557

Phone 931.484.2110
Fax 931.456.2956
E-Mail Crossc@CrossvilleInc.com
Web CrossvilleInc.com



NTR01 ▶ Femme Fatale 24 x 24 HON

Cover: **NTR05** ▶ Leading Man 24 x 36 UPS on floor
Laminam by Crossville ▶ Calce Grigio on bar



LIT-NTR-17