

Handwritten  
Wall Tile



---

# Handwritten

---

## Wall Tile

### Handmade styles that provide a unique look

Handwritten puts handmade, creative wall tile solutions at your fingertips. Handmade tile lends a tone of intimate sophistication to a space, Crossville's Handwritten line gives designers the creative expression of handmade tile in a consistent, quality execution. Crossville authored Handwritten to give designers unique and versatile accent and trim pieces for endless creative possibilities in a fully-finished presentation. It's our most colorful and robust line of hand-made wall-tile yet. Bold color statements coupled with classically inspired neutrals perfectly align with both color trend and timeless appeal in this line. Enjoy the feel of well-scripted accent areas through the gothic and standard pickets. Handwritten makes a design statement that is well worth noting. This handmade tile is intentionally designed to empower designers to leave their creative signature on interior walls.

With Handwritten, you get

- Elegant shapes that interact for design options
- Beautiful array of 9 colors
- 12 x 12 mosaics that work with pickets for unique patterns
- Variety of trim pieces to complete your design



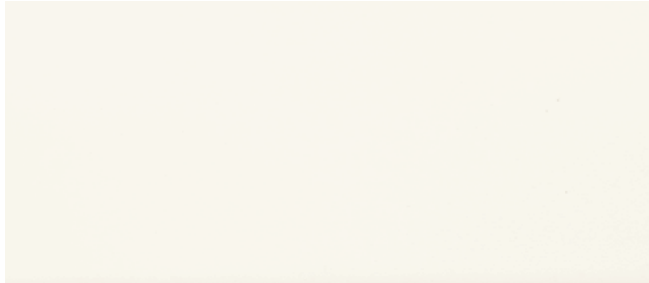
**HWR03** ▶ Private Affair 3 x 6 Gothic Picket Gloss



**HWR02** ▶ Post Card 3 x 6 Picket Gloss  
**HWR04** ▶ Dear Sir 3 x 6 Picket Gloss  
**HWR05** ▶ Par Avion 3 x 6 Picket Gloss

# Color Palette

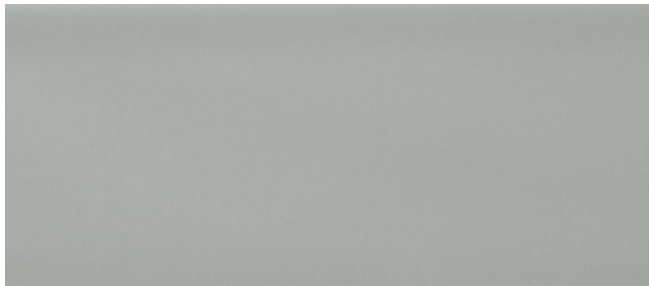
## Colors



HWR01 ▶ Unscripted



HWR02 ▶ Post Card



HWR03 ▶ Private Affair



HWR04 ▶ Dear Sir



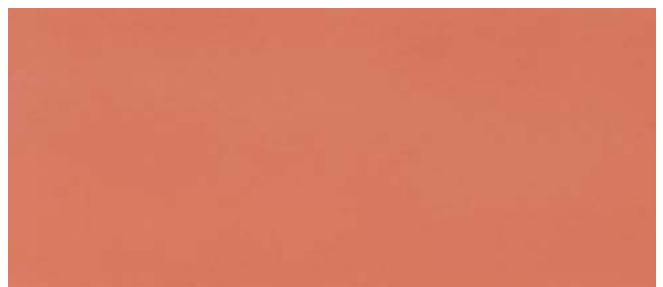
HWR05 ▶ Par Avion



HWR06 ▶ Pen Pal



HWR07 ▶ Gold Leaf



HWR08 ▶ Love Letter



HWR09 ▶ Inkwell





**HWR08** ▶ Love Letter 3 x 12 Gloss

# Specifications

## Sizes Available in all colors



3 x 6



3 x 12



3 x 6 Gothic Picket



3 x 6 Picket



Diamond Mosaic



Leaf Mosaic



**HWR07** ▶ Gold Leaf 3 x 6 Gloss

## Sizes & Finishes

### Field Tile

Nominal (in)	Actual (in)	Thickness (in)	Finish
3 x 6	3 x 6	3/8	Gloss
3 x 12	3 x 12	3/8	Gloss
3 x 6 Picket	3 x 6	3/8	Gloss
3 x 6 Gothic Picket	3 x 6	3/8	Gloss

Crossville recommends a 1/8 to 1/4 inch grout joint.

### Mosaics

Nominal (in)	Actual (in)	Thickness (in)	Finish
Diamond Mosaic	12 x 12	3/8	Gloss
Leaf Mosaic	12 x 12	3/8	Gloss

Mesh mounted on a 12 x 12 sheet.

### Coordinating Trim

Nominal (in)	Actual (in)	Thickness (in)	Finish
1/2 x 6 Arrow Liner	1/2 x 6	5/8	Gloss
1/2 x 6 Dome Liner	1/2 x 6	5/8	Gloss
2-1/2 x 6 Chair Rail	2-1/2 x 6	3/4	Gloss
3 x 6 Bullnose	3 x 6	3/8	Gloss
3 x 3 Bullnose Corner	3 x 3	3/8	Gloss



3 x 3  
Bullnose Corner



3 x 6  
Bullnose



2-1/2 x 6  
Chair Rail



1/2 x 6  
Dome Liner



1/2 x 6  
Arrow Liner

## Shade & Texture Index

Handwritten has a shade variation of V3.

V1



V2



V3



V4



V1 Uniform appearance  
V2 Slight Variation  
**V3 Moderate Variation**  
V4 Substantial Variation

This tile product is produced with a V3 variation. Expect that the amount of color and texture on each piece may vary significantly. Inspect the product upon delivery and for best results, blend tile from several cartons during installation.

### Recommended Use

Crossville® recommends Handwritten tile for interior vertical surfaces in all residential and light commercial applications. Applications may include light-duty bathroom walls, vanity tops, kitchen backsplashes, and light duty kitchen countertops.

### Handcrafted Variation

Handwritten tiles are manufactured to appear handmade. Due to this handmade appearance, variations in size, thickness, flatness and color are to be expected. Therefore, blending the tile before and during installation is recommended.

### Our Warranty

Crossville Inc. guarantees that its products will meet or exceed the performance specifications outlined in ANSI A137.1- 2012 and in the performance data section of the Crossville, Inc. general product catalog. For complete details check our website at CrossvilleInc.com.

### Care and Maintenance

Regular cleaning is the best way to keep Handwritten tile looking good for years to come. Use clean, hot water (combined with a household cleaner for more aggressive cleaning). Rinse thoroughly and dry with a soft cloth to prevent water spots. No waxes or sealers are needed. More information regarding the care and maintenance of Crossville® products is available at CrossvilleInc.com.

### Hydrotect™

Our tiles are available with Hydrotect. Crossville's revolutionary invisible coating harnesses the power of light, water, and oxygen to create the best defense against dirt and pollution. Whether indoors or out, floors and walls stay cleaner, providing a superior experience in any space. Not all colors are available with Hydrotect. Please see individual colors on CrossvilleInc.com for more details. For complete details check our website at CrossvilleInc.com.



### CrossvilleInc.com

If you want a better idea of what Crossville tile would look like in a particular room setting, simply visit our website and click on Cross-Vision. This powerful software tool allows you to visualize different types of Crossville tile. In addition, you'll find comprehensive information about Crossville's entire portfolio of products. You can also learn about the latest styles and trends from industry experts, download detailed care and maintenance instructions for our various products, or browse electronic versions of Crossville's product brochures. So whether you need information about Crossville products or tile in general, please visit us at CrossvilleInc.com.



HWR06 ▶ Pen Pal Diamond Mosaic Gloss

#### Trade Organizations



#### Environmentally Aware







**HWR04** ▶ Dear Sir 3 x 6 Picket and Diamond Mosaic on desk and archway Gloss

Nest **AV361** ▶ Levity Olive 6 x 36 on floor

**Laminam by Crossville** ▶ Satori Beige on wall

**Cover: HWR02** ▶ Post Card 3 x 6 and 3 x 12 Gloss

**HWR07** ▶ Gold Leaf 3 x 6 and 1/2 x 6 Arrow Liner Gloss