

Owen Stone

Porcelain Stone[®]

Available Colors



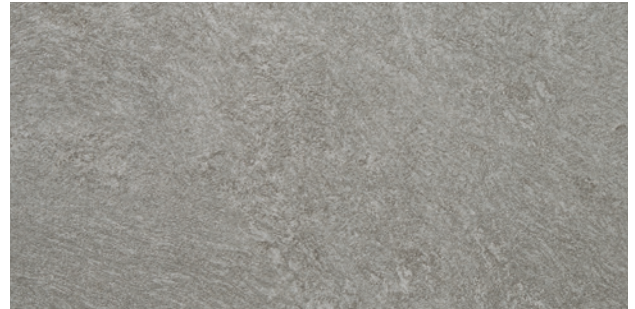
OST01 ▶ Down



OST02 ▶ Bunny



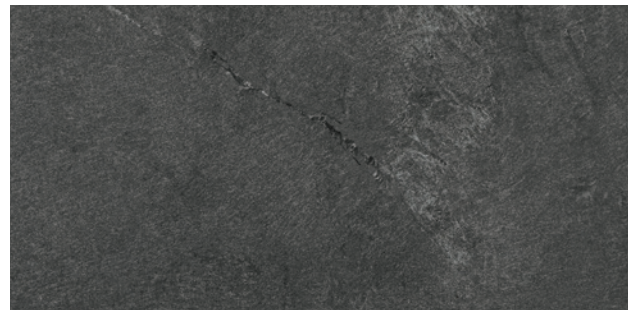
OST03 ▶ Slipper



OST04 ▶ Mittens



OST05 ▶ Sable



OST06 ▶ Teddy

Features and Benefits

- Unique Leathered finish offers the softest touch
- Subtle, minimalist veining resists high traffic and the elements indoors and out, thanks to an additional textured exterior finish offered in the line, for installations that flow from indoors to out.
- Field tiles range 24"x48" to 12"x24"
- The line's distinct triangular mosaic opens many design possibilities for floors and walls along with a 2"x2" mosaic.
- Complete your installations with 4 x 24 bullnose or 6 x 12 cove base
- Made in the USA and Green SquareSM Certified



Owen Stone

Porcelain Stone[®]

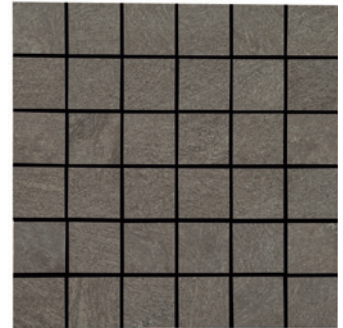
Owen Stone 2 x 2 and Crossville Mosaics



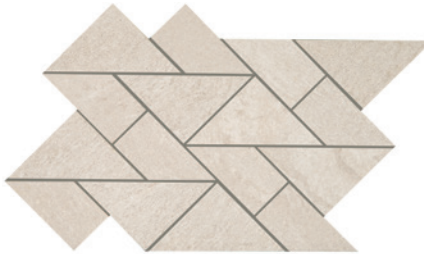
OST01.10202LMOS ▶
Down 2 x 2 Mosaic



OST03.10202LMOS ▶
Slipper 2 x 2 Mosaic



OST05.10202LMOS ▶
Sable 2 x 2 Mosaic



OST01.1CRSLMOS ▶
Down Crossville Mosaic†



OST03.1CRSLMOS ▶
Slipper Crossville Mosaic†



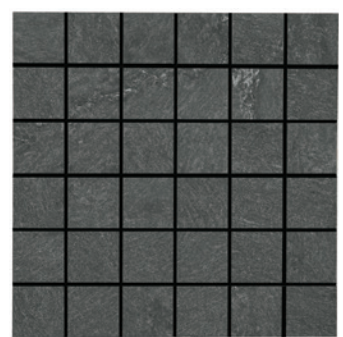
OST05.1CRSLMOS ▶
Sable Crossville Mosaic†



OST02.10202LMOS ▶
Bunny 2 x 2 Mosaic



OST04.10202LMOS ▶
Mittens 2 x 2 Mosaic



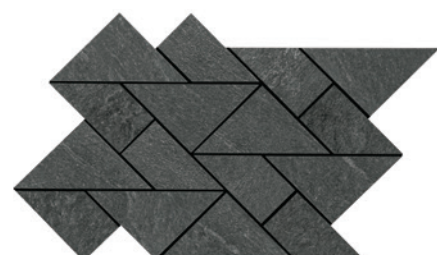
OST06.10202LMOS ▶
Teddy 2 x 2 Mosaic



OST02.1CRSLMOS ▶
Bunny Crossville Mosaic†



OST04.1CRSLMOS ▶
Mittens Crossville Mosaic†



OST06.1CRSLMOS ▶
Teddy Crossville Mosaic†

† Due to this mosaic's design, caution should be used when installing on surfaces that might contact bare skin or other delicate materials. To prevent possible injury or damage from sharp corners that might be exposed above the grout line, install per ANSI 108 guidelines in order to minimize or prevent lippage.

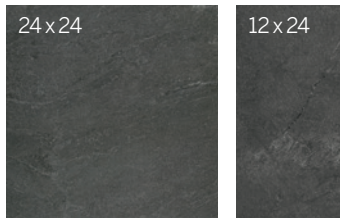
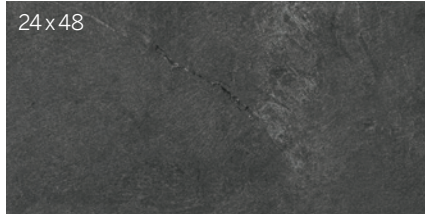


Owen Stone

Porcelain Stone®



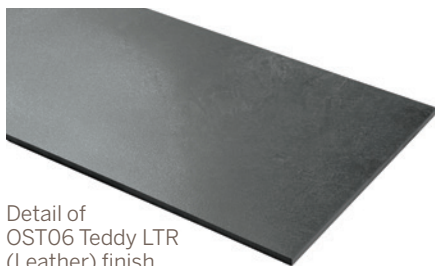
Sizes (Shown in OST06 Teddy)



Crossville Mosaic†
(Mounted on a 217 x 372 mm sheet)

2 x 2 Mosaic
(Mounted on a 298 x 298 mm sheet)

† Due to this mosaic's design, caution should be used when installing on surfaces that might contact bare skin or other delicate materials. To prevent possible injury or damage from sharp corners that might be exposed above the grout line, install per ANSI 108 guidelines in order to minimize or prevent lippage.



Detail of OST06 Teddy LTR (Leather) finish.

Get Planked!

Our Porcelain Stone® products are available in popular plank shapes with no minimum order and quick fulfillment.

See website for more details and sizes.



Sizes & Finishes

Field Tile - Rectified

Available in all colors

| Nominal (in) | Actual (mm) | Thickness (mm) | Grout Joint (mm) | Finish |
|--------------|-------------|----------------|------------------|----------|
| 12 x 24 | 297 x 597 | 9.5 | 3 | LTR/EXT* |
| 24 x 24 | 597 x 597 | 9.5 | 3 | LTR/EXT |
| 24 x 48 | 597 x 1197 | 10.5 | 3 | LTR |

Note: Field tile is rectified with a minimum 3mm grout joint

* Extended lead time on 12 x 24 EXT finish.

Mosaics

Available in all colors

| Nominal (in) | Actual Size (mm) | Thickness (mm) | Grout Joint (mm) | Finish |
|-----------------------|------------------|----------------|------------------|--------|
| 2 x 2 Mosaic** | 298 x 298 | 9.5 | 3 | LTR |
| Crossville Mosaic***† | 217 x 372 | 9.5 | 2 | LTR |

** Mounted on 298mm x 298mm sheet with 3mm grout joints (Coverage area 0.9752 sf)

*** Mounted on 217mm x 372mm sheet with 2mm grout joints (Coverage area 0.5780 sf)

† Due to this mosaic's design, caution should be used when installing on surfaces that might contact bare skin or other delicate materials. To prevent possible injury or damage from sharp corners that might be exposed above the grout line, install per ANSI 108 guidelines in order to minimize or prevent lippage.

Coordinating Trim

Available in all colors

| Nominal (in) | Actual (mm) | Thickness (mm) | Grout Joint (mm) | Finish |
|------------------------|-------------|----------------|------------------|--------|
| 6 x 12 Cove Base | 150 x 297 | 9.5 | 3 | UPS |
| 4 x 24 Single Bullnose | 96 x 597 | 9.5 | 3 | LTR |



6 x 12 Cove Base



4 x 24 Bullnose

Product Performance

| | | |
|---------------------|------------|------------|
| Breaking Strength | >450 lbf | ASTM C648 |
| Bond Strength | >200 psi | ASTM C482 |
| Chemical Resistance | Unaffected | ASTM C650 |
| Frost Resistance | Resistant | ASTM C1026 |
| Water Absorption | <0.50% | ASTM C373 |
| Scratch Hardness | 7 | Mohs Scale |

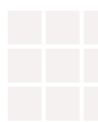
Wet Dynamic Coefficient of Friction Range

| | | |
|----------------|-------------|-------------|
| LTR (Leather) | 0.42 - 0.52 | ANSI A326.3 |
| EXT (Textured) | 0.60 - 0.70 | ANSI A326.3 |

Shade & Texture Index

Owen Stone has a shade variation of V3.

V1



V2



V3



V4



V1 Uniform appearance
V2 Slight Variation
V3 Moderate Variation
V4 Substantial Variation

This porcelain tile product is produced with a V3 variation. While the colors and/or textures present on a single piece of tile will be indicative of the colors and/or textures to be expected on the other tiles, the amount of colors and/or texture on each piece may vary significantly. It is recommended that the range be viewed before selection.

Application Areas

| Finish | Interior Floors (dry) | Interior Walls (wet/dry) | Exterior Walls | Interior Floors (Standing water/shower floors) | Exterior/Paving | Pool/Fountain Full Lining** | Water Line Pool/Fountains |
|--------|-----------------------|--------------------------|----------------|--|-----------------|-----------------------------|---------------------------|
| LTR | ✓ | ✓ | ✓ | | | ✓ | ✓ |
| EXT | ✓ | ✓ | ✓ | | ✓ | ✓ | ✓ |

** Excludes mesh mounted mosaics. Crossville recommends face mounted or edge mounted mosaics for fully submerged applications. Contact your Crossville sales representative for more information.

NOTE: Trim applications will differ from field tile applications for the same series.

For more information on ANSI- A362.3 visit our website at <https://www.crossvilleinc.com/Resources/Tile-101/DCOF?tab=1>

Owen Stone

Crossville, Inc.

PO Box 1168
Crossville, TN
38557

Phone 931.484.2110
Fax 931.456.2956
E-Mail Crossc@CrossvilleInc.com
Web CrossvilleInc.com

Recommended Use

Owen Stone LTR is recommended for interior floors, interior walls, countertops, exterior walls, pool waterlines and full linings[†] in both residential and commercial applications. Owen Stone LTR is not recommended for exterior horizontal surfaces or exterior paving. Owen Stone EXT is recommended for exterior floors and walls in both residential and commercial applications. See CrossvilleInc.com for detailed installation instructions.

[†]Excludes mesh mounted mosaics.

Leather Finish (LTR)

Crossville® Leathered finish creates a subtle glow, visual depth, and a smooth feel. The finish is achieved by running diamond-tipped brushes over the surface of fired porcelain tile, resulting in an incredibly soft feel and tremendous visual richness. While our Leathered finish may be soft to the touch, the DCOF remains high, making it suitable for residential and commercial interior floor and wall applications and exterior vertical surfaces.

Wet area use for Owen Stone Mosaics

Crossville® produces the Owen Stone 2 x 2 and Crossville mosaics with the Leather (LTR) finish. The ANSI A326.3 wet Dynamic COF of Owen Stone is ≥ 0.42 . Their small sizes ensure frequent grout joints which provides traction and drainage. Crossville cannot control situations involving incorrect installation, improper slope to the drain for elimination of standing water and poor surface cleaning.

This information is provided so that customers may make a realistic and informed decision when comparing Owen Stone to other tile products in wet area environments, such as residential/commercial bathrooms, showers, and interior pool decks.

Care and Maintenance

Regular cleaning is the best way to keep Owen Stone tile looking good for years to come. Use clean, hot water (combined with a household cleaner for more aggressive cleaning). Rinse thoroughly and dry with a soft cloth to prevent water spots. No waxes or sealers are needed. More information regarding the care and maintenance of Crossville products is available at CrossvilleInc.com.

Information listed here is subject to change. Please refer to CrossvilleInc.com for the latest, most accurate information.

▶▶ Crossville® Sample Express

Visit the website to learn more:
CrossvilleInc.com/Products/Owen-Stone

Loose Tile Samples

Sizes may vary depending on product series
Max. of 4 large field tile per order

Standard Shipping

FedEX Ground

National Accounts

For over 20 years we have been offering Porcelain tile to commercial customers at National Accounts pricing programs with special discounts. The National Accounts department provides materials forecasting, sales support and samples.

CrossvilleInc.com

If you want a better idea of what Crossville tile would look like in a particular room setting, simply visit our website and click on Cross-Vision. This powerful software tool allows you to visualize different types of Crossville tile. In addition, you'll find comprehensive information about Crossville's entire portfolio of products. You can also learn about the latest styles and trends from industry experts, download detailed care and maintenance instructions for our various products, or browse electronic versions of Crossville's product brochures. So whether you need information about Crossville products or tile in general, please visit us at CrossvilleInc.com.

Our Warranty

Crossville Inc. guarantees that its products will meet or exceed the performance specifications outlined in ANSI A137.1 and in the performance data section of the Crossville, Inc. general product catalog. For complete details check our website at CrossvilleInc.com.

Trade Organizations



Environmentally Aware

