

Industrial Tile Series



Industrial Tile Series

The Industrial Tile Series by Crossville is a culmination of over 30 years of experience in the manufacturing of high performance porcelain tile. Crossville has supplied over 20 million square feet to various automotive; food service and industrial projects throughout the United States and Canada.

Advanced Finishes for High Exposure Areas

- Textures for any technical specification

Versatile Design Options

- Three sizes and nine color options in traditional 5/16 inch thickness
- Fully stocked coordination trim package
- Clinker-Style 15mm thick, fully vitrified porcelain tile in two colors



Cross-Colors Mingles with Cross-Tech

Crossville Cross-Sheen Finish

- Crossville finish minimizes staining & scuffing

Includes Recycled Content

- Up to 30-35% recycled content for some options

Extended Systems Warranty

- Available with Crossville's setting materials partners



Cross-Colors Mingles with Cross-Tech A750 Brown Tweed
Cross Tread

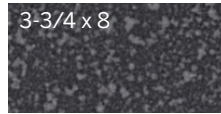
Clinker-Style AutoPaver™ by Crossville®

Full-Vitrified Porcelain Tile

Crossville's AutoPaver Series ensures supportive strength and greater impact resistance. With a thickness of 15mm, this Clinker-Style fully vitrified porcelain tile can be installed using either the vibrating installation system or a traditional thin-set system. The combination of impervious porcelain tile with Cross-Sheen finish provides high degree of chemical resistance and ensures ease of cleaning.

This domestically produced material is readily available and has a sustainability story second to none. Some available colors are made from 30-35% recycled content, including up to 4% outside post-consumer waste.

Sizes (Available in all colors)



Sizes & Finishes

Field Tile

Available in all colors

Nominal (in)	Actual (mm)	Thickness (mm)	Finish
3-1/4 x 8	97 x 200	15	UPS

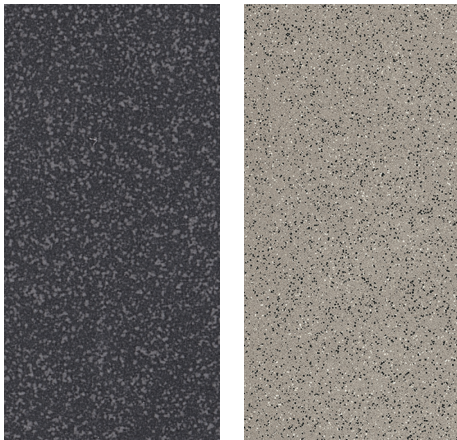
Crossville recommends a grout joint of 3mm.

Actual measurements stated in inches indicate tile is calibrated (non-rectified). Actual measurements stated in mm indicate tile is rectified.

Product Performance

Breaking Strength	1,000 lbf	ASTM C648
Bond Strength	>200 psi	ASTM C482
Chemical Resistance	Unaffected	ASTM C650
Frost Resistance	Resistant	ASTM C1026
Water Absorption	<0.20%	ASTM C373
Scratch Hardness	6	Mohs Scale

Colors



AP880 ▶ Onyx

AP001 ▶ Grey Mingle*

*Grey mingle is made from 30-35% recycled content

- Suitable for floors that require extremely high breaking strength
- Vibration or traditional thin-set installation
- Cross-Sheen® for added stain resistance
- Made in the U.S.A.

Wet Dynamic Coefficient of Friction Range

Unpolished	≥0.42	ANSI A326.3
------------	-------	-------------

German Ramp Value

Unpolished	R10	DIN51130
------------	-----	----------

Shade & Texture Index

AutoPaver has a shade variation of V1.



This porcelain tile product is produced with a V1 variation. Differences among pieces from the same production run are minimal.

Recommended Use

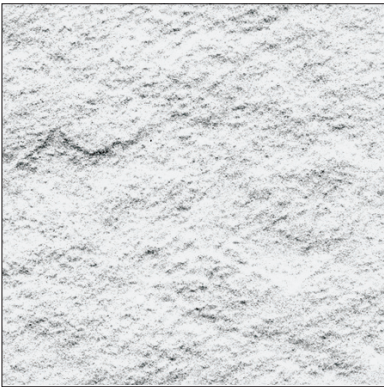
Designed for use in areas that undergo:

- High traffic
- High-stress loads
- Harsh environments
- Extreme temperatures

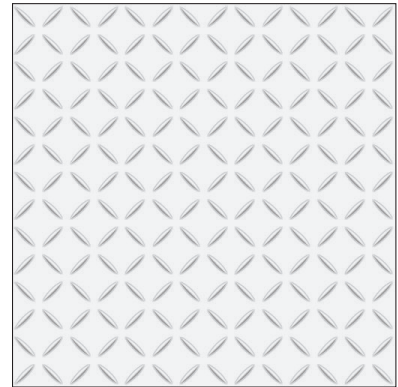
Cross-Tech

Industrial Tile Series by Crossville®

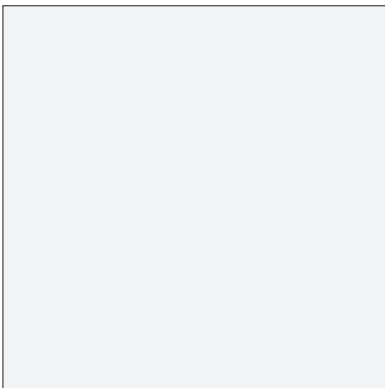
Cross-Tech Series offers the utilitarian answers to the specific needs of those areas with the highest exposure. These textures are an integral part of the tile and cannot be worn down. Designed to coordinate with our Clinker Paver Series Crossville's Industrial Series can support any technical specification that is not only functional but also blends beautifully with design application.



The **Cross-Slate® (CS)** finish combines the textured feel of slate with the through-body color and durability. Cross-Slate is recommended for high traffic commercial interior and exterior floors.



The **Cross-Tread® (CTS)** finish offers increased slip resistance and ease of maintenance, making this tile a suitable choice for high traffic commercial wet and greasy floor areas, as well as for exterior walking surfaces.



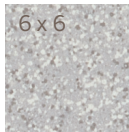
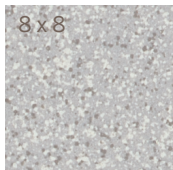
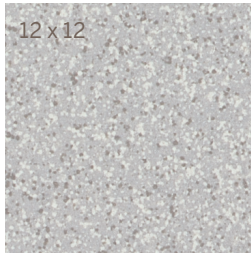
Unpolished (UPS) with the Cross-Sheen® finish imparts a subtle glow that enhances the color of the tile and also allows stains and scuff marks to be easily wiped off the surface. Cross-Colors unpolished is appropriate for most high traffic commercial interior floors and walls and exterior walls.



Polished (PO) enhance your space with a look of elegance and sophistication with complimentary colors in our Polished finish. Polished finish is suitable for vertical interior and exterior applications as well as interior floors excluding wet areas where standing water may occur.

Specifications

Sizes



Care and Maintenance

Regular cleaning is the best way to keep Industrial Tile Series looking good for years to come. Use clean, hot water (combined with a household cleaner for more aggressive cleaning). Rinse thoroughly and dry with a soft cloth. No waxes are needed. More information regarding the care and maintenance of Crossville® products is available at CrossvilleInc.com.

Information listed here is subject to change. Please refer to CrossvilleInc.com for the latest, most accurate information.

Sizes & Finishes

Field Tile

Nominal (in)	Actual (in)	Thickness (in)	Finish
6 x 6*	5-3/4 x 5-3/4	5/16	UPS/PO/CS
8 x 8	7-3/4 x 7-3/4	5/16	UPS/CS/CTS
12 x 12	11-3/4 x 11-3/4	5/16	UPS/PO/CS

Crossville recommends a minimum grout joint of 3/16 inch.

*NOTE: The cut/bevel tile is cut from larger format tile and the edges are beveled to provide a factory appearance.

6 x 6 CS and PO are not stocked and require an extra two to eight weeks for delivery depending on Crossville's production schedule.

Actual measurements stated in inches indicate tile is calibrated (non-rectified).

Actual measurements stated in mm indicate tile is rectified.

Product Performance

Breaking Strength	300 lbf	ASTM C648
Bond Strength	>200 psi	ASTM C482
Chemical Resistance	Unaffected	ASTM C650
Frost Resistance	Resistant	ASTM C1026
Water Absorption	<0.10%	ASTM C373
Scratch Hardness		Mohs Scale
UPS, CS, CTS	6	
PO	5	

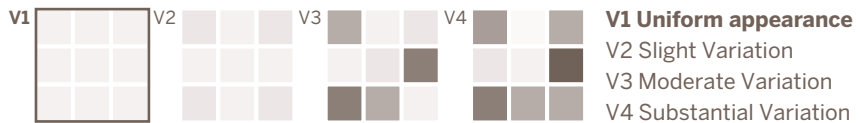
Wet Dynamic Coefficient of Friction Range

Unpolished (UPS)	0.50 - 0.60	AcuTest sm
Cross-Slate (CS)	0.50 - 0.60	
Cross-Tread (CTS)	0.50 - 0.60	
Polished (PO)	0.31 - 0.41	

* The increased real world traction of these types of surfaces cannot be fully realized by any current COF testing methodologies due to their exaggerated facial structure.

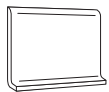
Shade & Texture Index

Cross-Colors Mingles has a shade variation of V1.



Differences among pieces from the same production run are minimal.

Coordinating Trim



Cove Base
(Standard, round top)



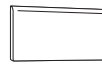
Inside
Cove Base Corner



Cove Base
Corner-Left



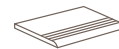
Cove Base
Corner-Right



Bullnose



Left & Right
Bullnose Corners



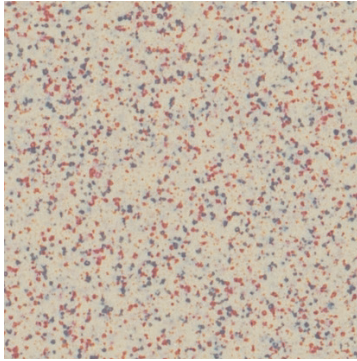
Bullnose
Stair Tread

Trim Program (Available in UPS finish only)

Size	6x8	1x6	6x8 Inside & Outside	4x8	4x8 Left & Right	4x8
Cove Base	Cove Base	Cove Base Corner	Cove Base Corner	Bullnose	Bullnose corners	Bullnose Stair Tread
Actual	5-7/8 x 7-3/4	1x5-7/8	5-7/8 x 7-3/4	3-7/8 x 7-3/4	3-7/8 x 7-3/4	3-7/8 x 7-3/4
Thickness	5/16		5/16	5/16	5/16	5/16

Cross-Tech Porcelain Stone[®]

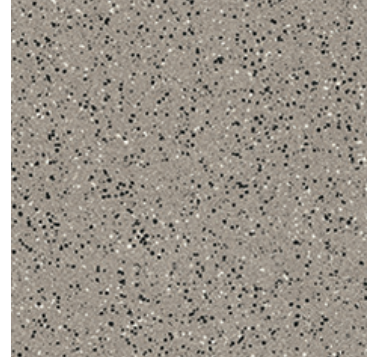
Available Colors



A233 ▶ Sand Bisque



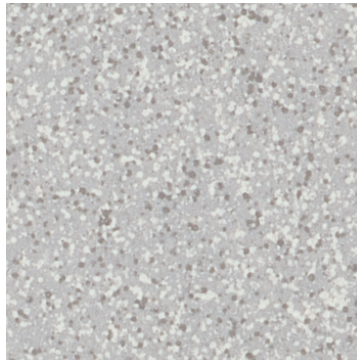
A675 ▶ Stonehenge



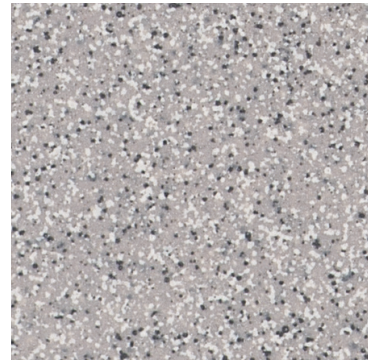
R001 ▶ Grey Mingle
Coordinates with Clinker Paver Series



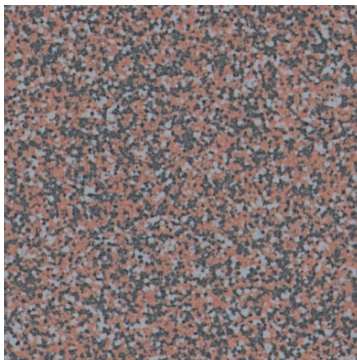
A750 ▶ Brown Tweed



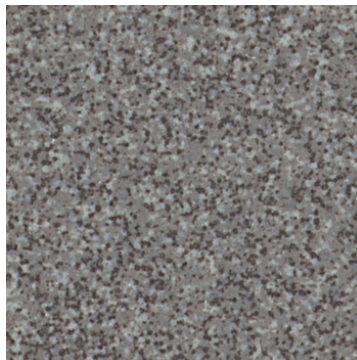
A825 ▶ Mercury



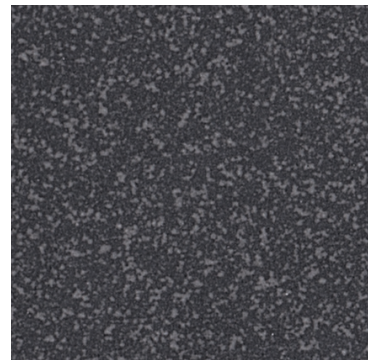
A900 ▶ Mica



A790 ▶ Burgundy Smoke



A850 ▶ Graphite



A880 ▶ Onyx
Coordinates with Clinker Paver Series

Trade Organizations



Environmentally Aware



Industrial Tile Series

The Industrial Tile Series by Crossville answers the need for areas with the highest exposure. The porcelain tile system focused on environments that experience high traffic and harsh conditions, including: extreme temperature change; high point loads; exposure to strong chemical cleaners and daily sterilization processes.

DESIGN SOLUTIONS

Areas of Application

- Auto service bays
- Food Industry
- Beverage Industry
- Dairy Industry
- Chemical Industry
- Back of House
- Warehouse

TECHNICAL DISTINCTION

High Performing Products

- Domestically Produced & Stocked
- Cross-Sheen Protective Finish
- Trim Essentials
- Multiple Surface Options



OPERATIONAL EXCELLENCE

Trusted & Dedicated

- Supply Chain Management
- Exceptional Logistics Program
- Prescriptive Maintenance Plans
- Technical & Customer Support



Industrial Tile Series

Crossville, Inc.

PO Box 1168
Crossville, TN
38557

Phone 931.484.2110
Fax 931.456.2956
E-Mail Crossc@CrossvilleInc.com
Web CrossvilleInc.com



Floor: Cross-Colors Mingles with Cross-Tech
Cover - AutoPaver AP880 ▶ Onyx and AP001 ▶ Grey Mingle

